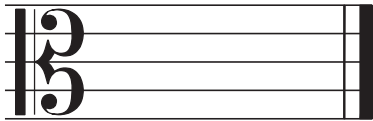
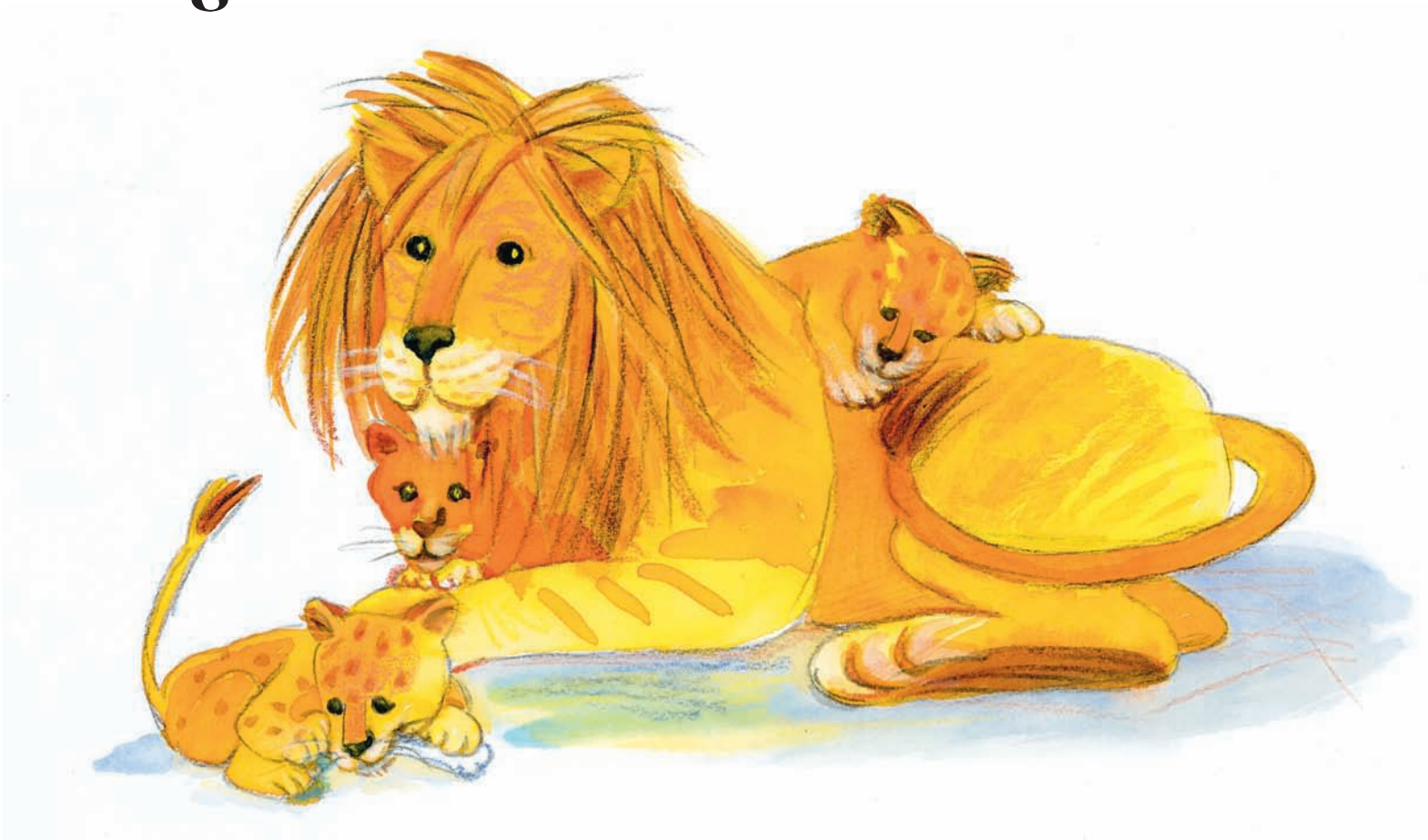


Die C-Saite:



o



□ V □ V

Cä - sar, Cä - sar, Lö - wen - kind, Lö - wen - schweif,

A musical staff with a treble clef. The notes are: C4 (open), C4 (open), G4 (open), G4 (open), C5 (filled), C5 (filled), G4 (open), G4 (open), C5 (open). There are repeat signs after the second and fourth measures. Above the staff, there are square and V-shaped symbols above the first and third measures respectively.

□ □

gro - ße Lö - wen - mäh - ne, Knurr - lö - we, Fress - lö - we.

A musical staff with a treble clef. The notes are: C4 (open), C4 (open), G4 (filled), G4 (filled), A4 (filled), A4 (filled), C5 (open), C5 (open), G4 (open), G4 (open), C5 (open). There are repeat signs after the second and fourth measures. Above the staff, there are square symbols above the first and third measures respectively.